

EAST-ADL Introduction

EAST-ADL Tooling

Tool Categories

- **Modelling Tools**

- Language Support: core east-adl editing functionalities, sometimes graphical
- Methodology support: extensions to core editing functionalities for software synthesis, requirement management, model validation, etc.
 - Open source editors:
 - UML-modeling with Papyrus and EAST-ADL profile (graphical)
 - EATOP – EAST-ADL Open Tool Platform
 - Commercial editors
 - MetaEdit+ from MetaCase (graphical)
 - SystemWeaver from Systemite (graphical)
- Interoperability support: import/export capabilities realized through (de-)serialization of EAXML formats

- **Analysis Tools: verification activities, either**

- Offered as extension of a modelling tool, or
- External tools integrated to modelling tools by means of transformations

- **Optimization Tool: integrates a modelling tool (to specify the model to optimize) and analysis tools (to carry multi-objective optimization based on different analysis outputs)**

Tools

Analysis Tools

Analysis Tool #1
 (e.g. UPPAAL)

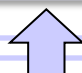
Analysis Tool #2
 (e.g. Simulink)

Analysis Tool #4
 (e.g. Hip-hops)

Analysis Tool #3
 (e.g. Qompass)

Optimization Tool (OptiPal)



 **Analysis gateways**

EAST-ADL Modelling Tool #1

(e.g. MetaEdit+)

model



EAST-ADL Modelling Tool #2

(e.g. SystemWeaver)

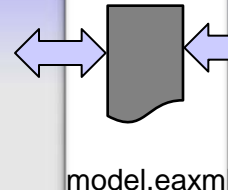
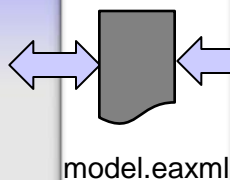
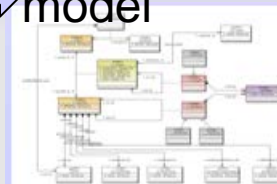
model



EAST-ADL Modelling Tool #3

(e.g. Payrus+)

model



Modeling Platform

Papyrus-based tooling

Language
support



Papyrus
implementation
of UML profile
for EAST-ADL

Methodology
support



AUTOSAR
Gateway:
automatic
synthesis of
Autosar
architecture

Interoperability
support



EAXML
export



eatop



ARXML
export



AUTOSAR Tool Platform User Group

Papyrus UML tool for EAST-ADL

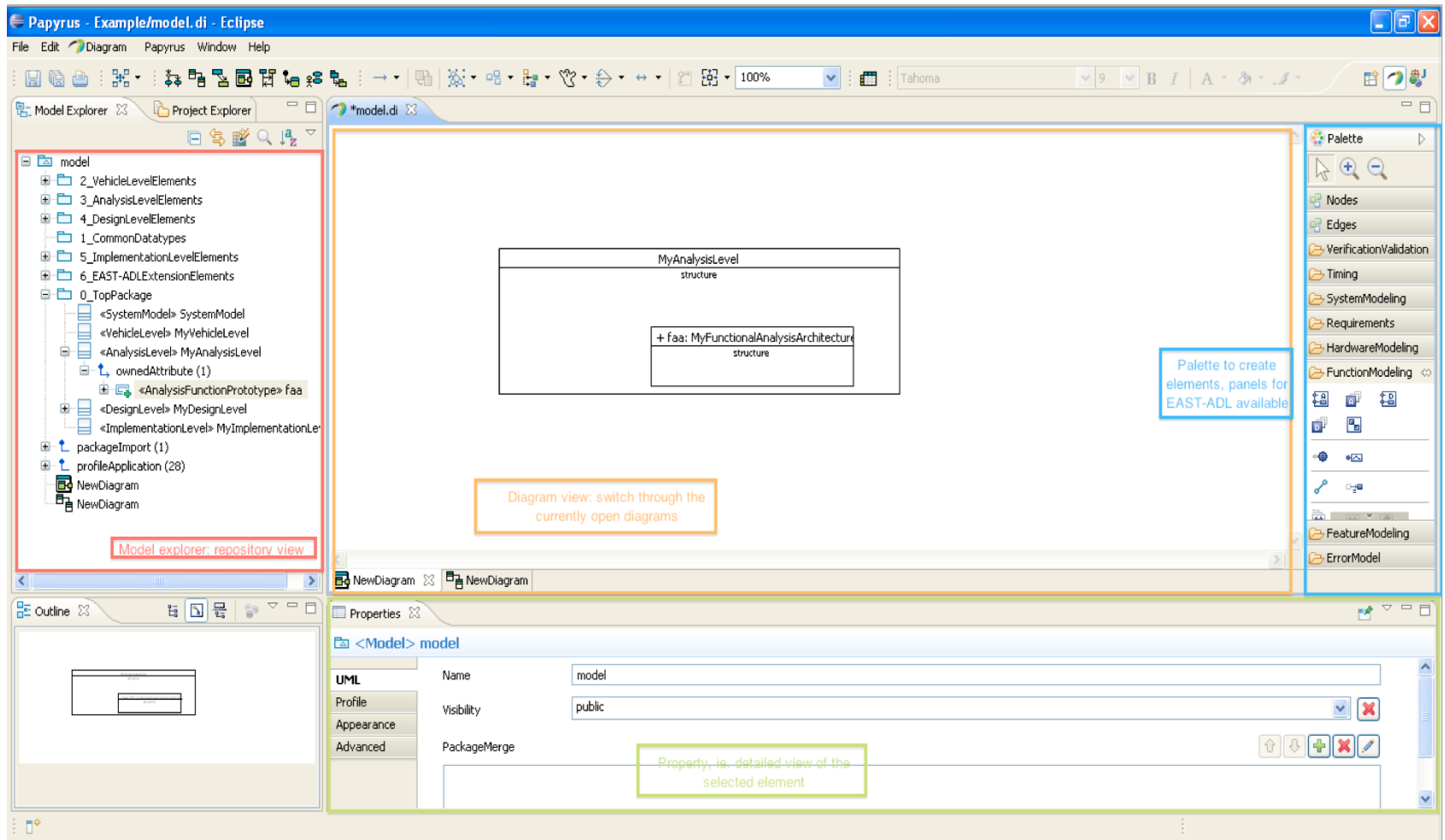
Eclipse MDT project

- Eclipse UML2 compliance
- Full respect of the UML2 standard as defined by the OMG
- Full respect of the DI (OMG Diagram Interchange) standard
- Extendable architecture of Papyrus that allows users to add new diagrams, new code generators, etc.
- Profile development support

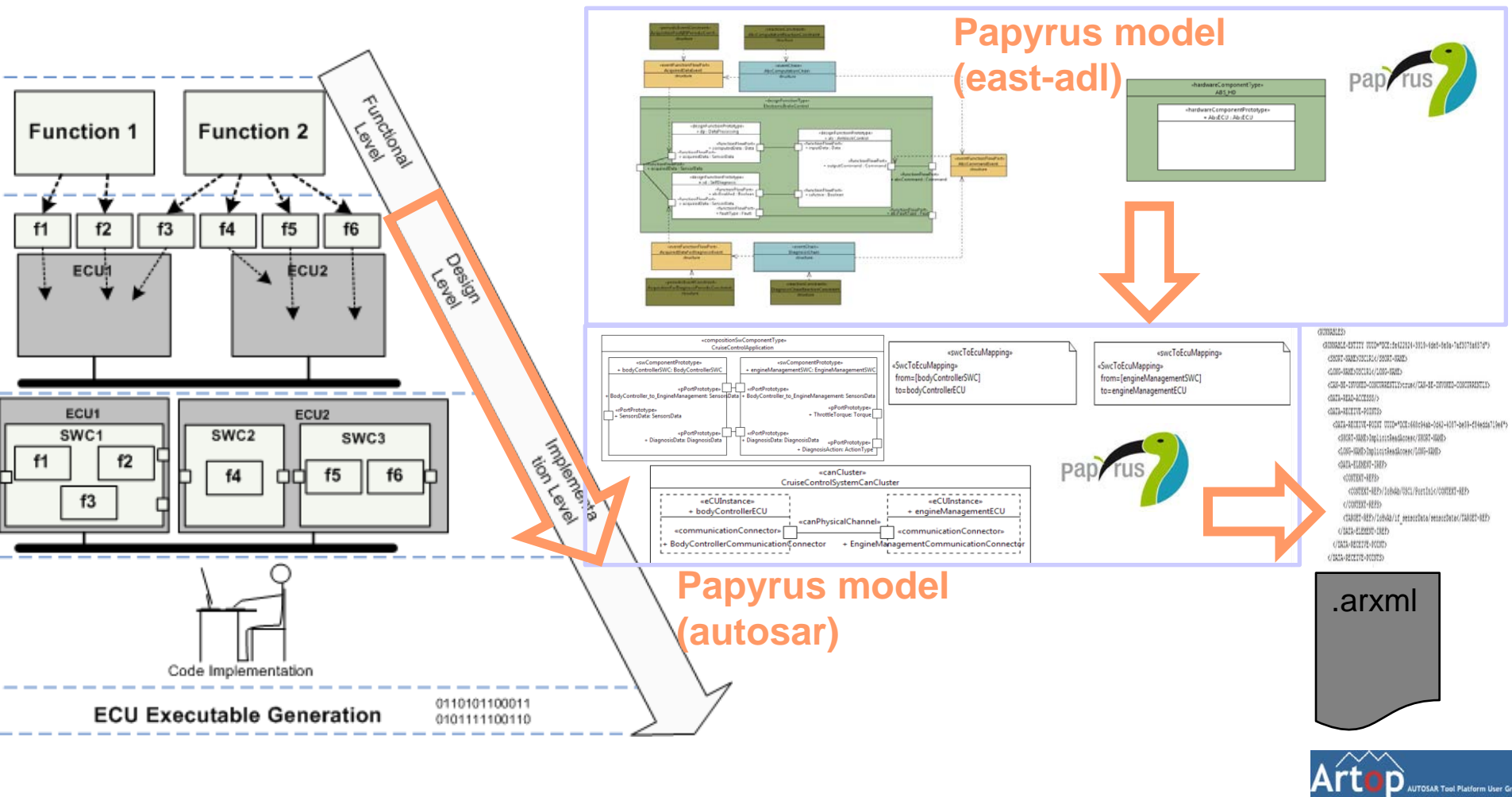
EAST-ADL Support

- Complete zip bundle, ready to use
- Tutorials for modeling, plugin development, etc. available

The most important views of a papyrus model



Autosar Gateway



EAXML export

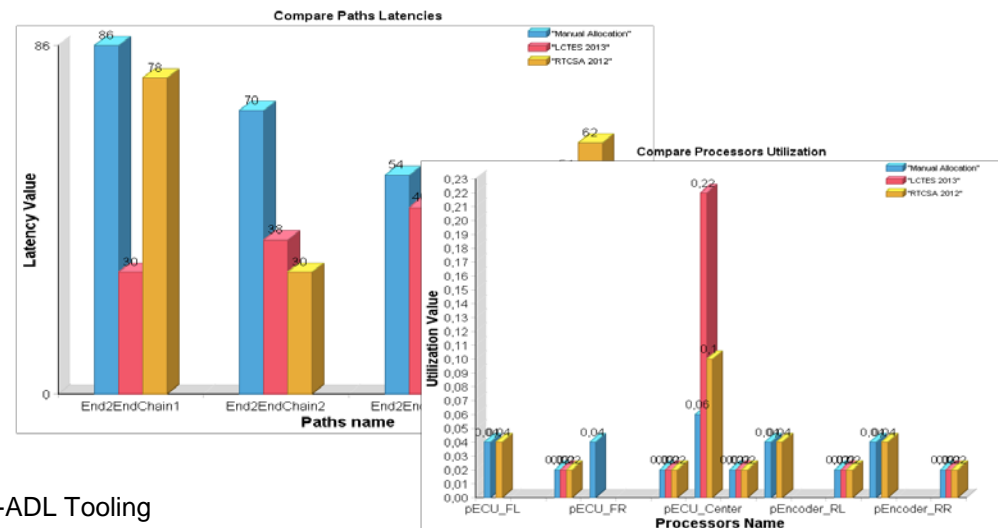


Papyrus enabled analysis tools

- Hip-Hops: for FTA and FMEA (safety, dependability analysis)

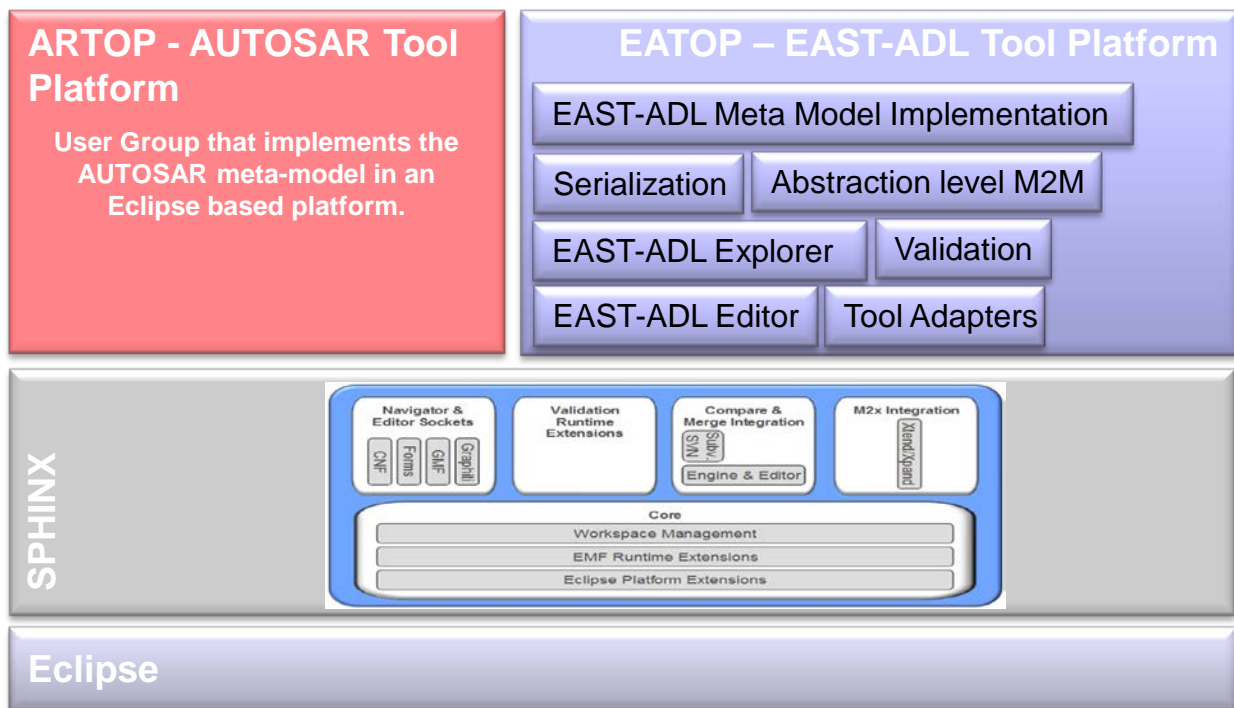
Top Events FMEA		Top Events	
Top Event (Effect)	Omission-VehicleSpeedEstimator.VehicleSpeedEst	Omission-VehicleSpeedEstimator.VehicleSpeedEst(17)	
Description	N/A	VehicleSpeedEstimator.Failure(9)	
System Unavailability	0.0220758	(15)	
Severity	0	(129)	
Number Of Cut Sets	16	WheelSpeedSensorDevice_RL.EMI(42)	
7 x Cut Sets of Order 1		WheelRotationEncoder_RL.Failure(26)	
WheelSpeedSensorDevice_FR.EMI		RotationIn_RL.Failure(5)	
WheelSpeedSensorDevice_FL.EMI		(132)	
WheelRotationEncoder_FR.Failure		WheelSpeedSensorDevice_RR.EMI(46)	
WheelRotationEncoder_FL.Failure		WheelRotationEncoder_RR.Failure(30)	
RotationIn_FR.Failure		RotationIn_RR.Failure(7)	
RotationIn_FLn.Failure		WheelSpeedSensorDevice_FL.EMI(34)	
VehicleSpeedEstimator.Failure		WheelRotationEncoder_FL.Failure(18)	
9 x Cut Sets of Order 2		RotationIn_FLn.Failure(1)	
WheelSpeedSensorDevice_RL.EMI		WheelSpeedSensorDevice_FR.EMI(38)	
WheelSpeedSensorDevice_RR.EMI		WheelRotationEncoder_FR.Failure(22)	
WheelRotationEncoder_RR.Failure		RotationIn_FR.Failure(3)	
WheelSpeedSensorDevice_RL.Failure			
WheelSpeedSensorDevice_RR.EMI			

- Qompass : for schedulability estimation

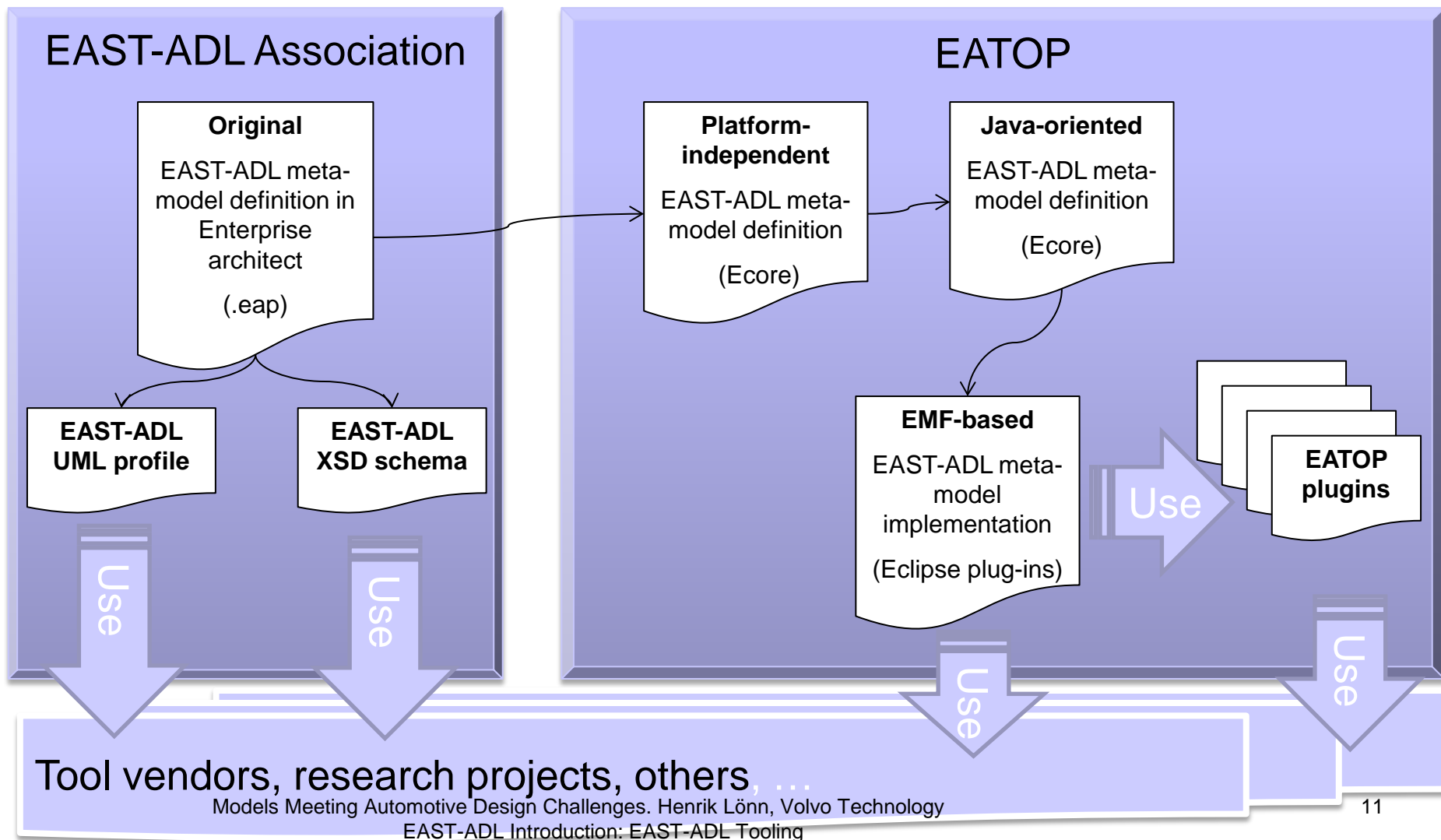


EATOP – EAST-ADL Tool Platform

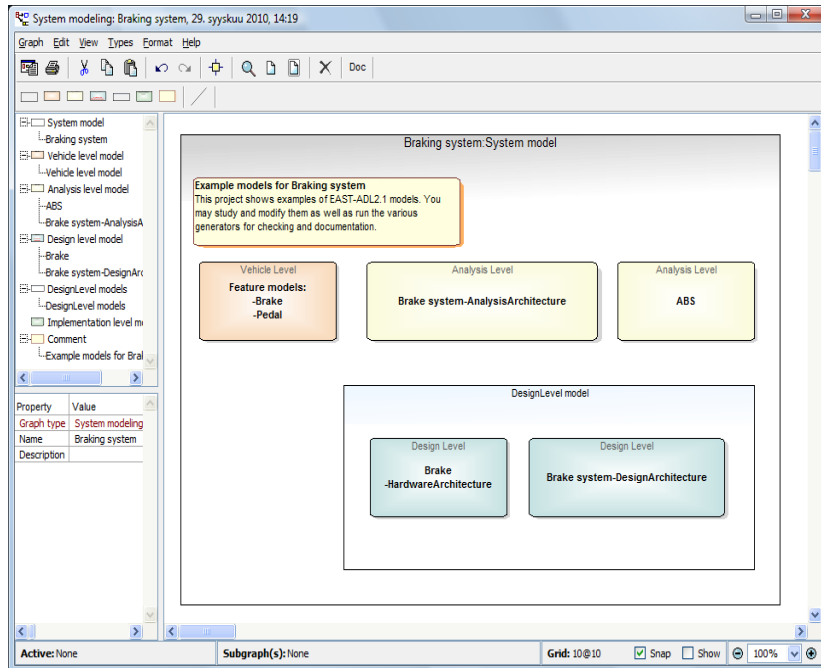
- Eclipse project initiated
 - Eclipse Automotive Industry Working Group
- Conceptually aligned with ARTOP
- Fully open



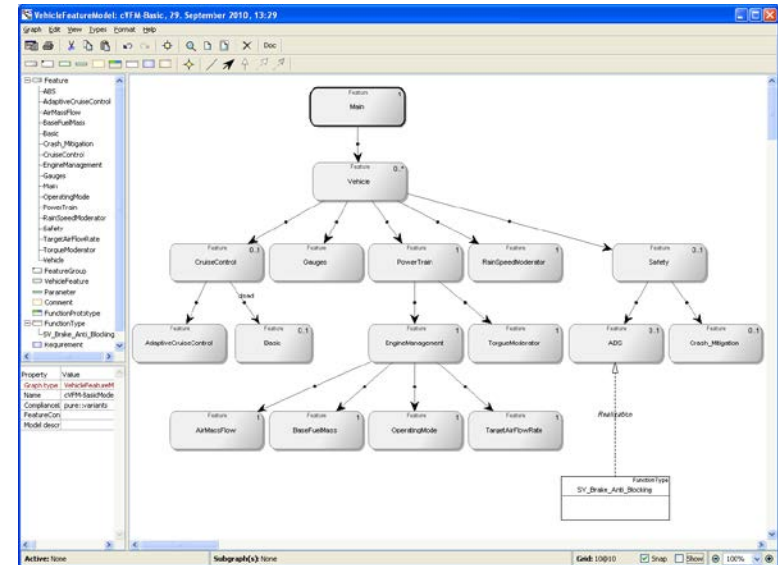
EATOP – EAST-ADL Tool Platform



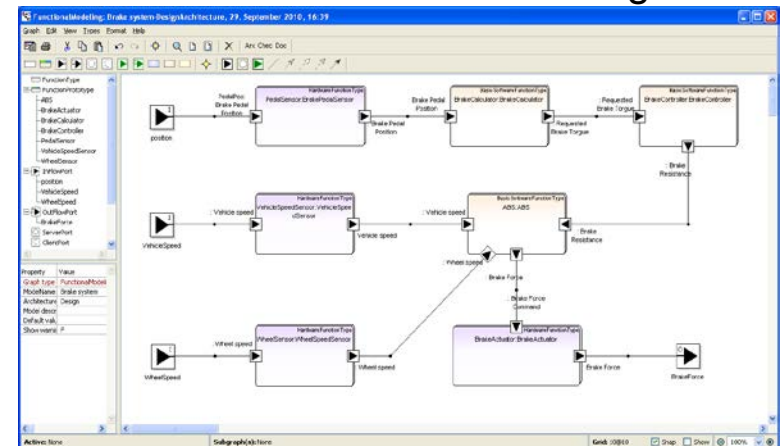
EAST-ADL with MetaEdit+



SystemModeling



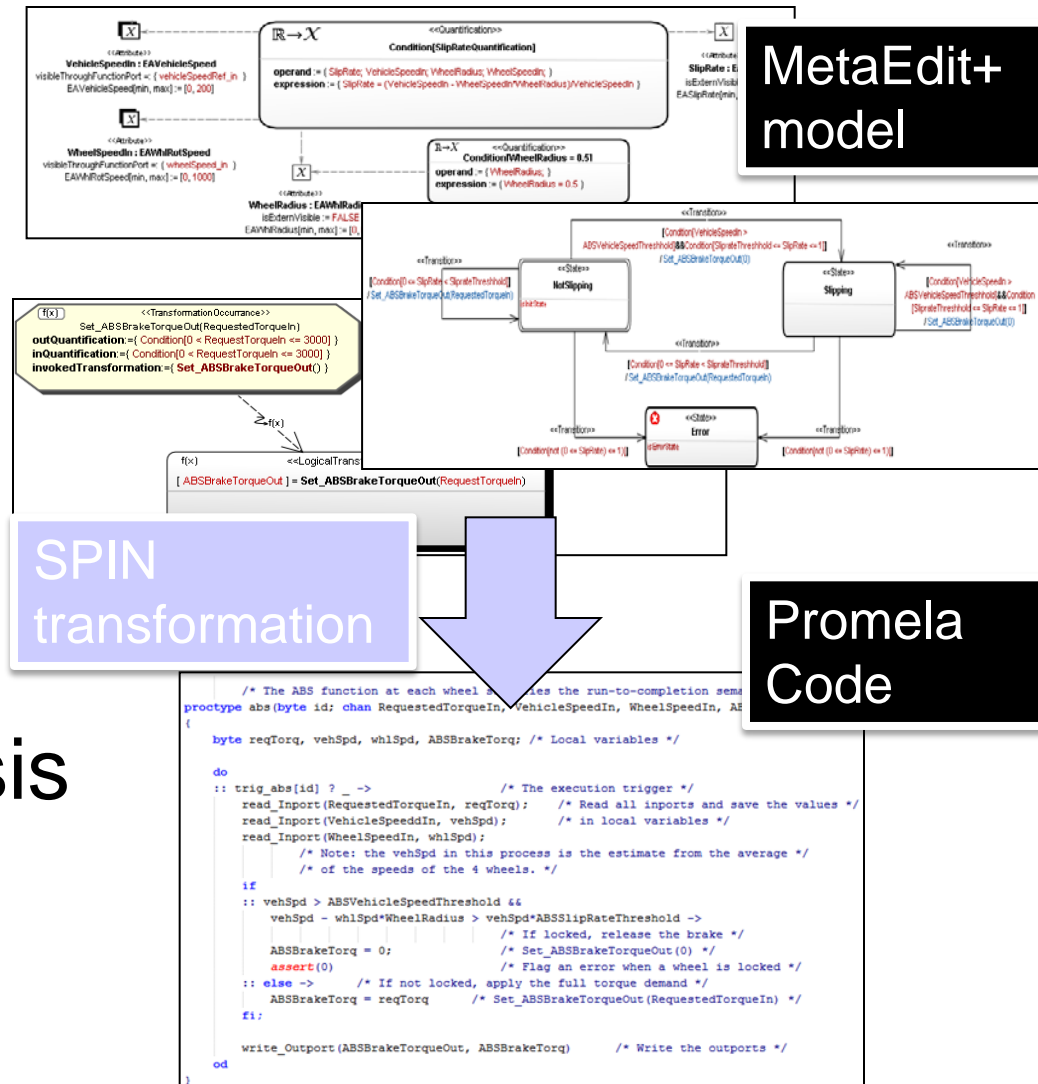
VehicleFeatureModeling



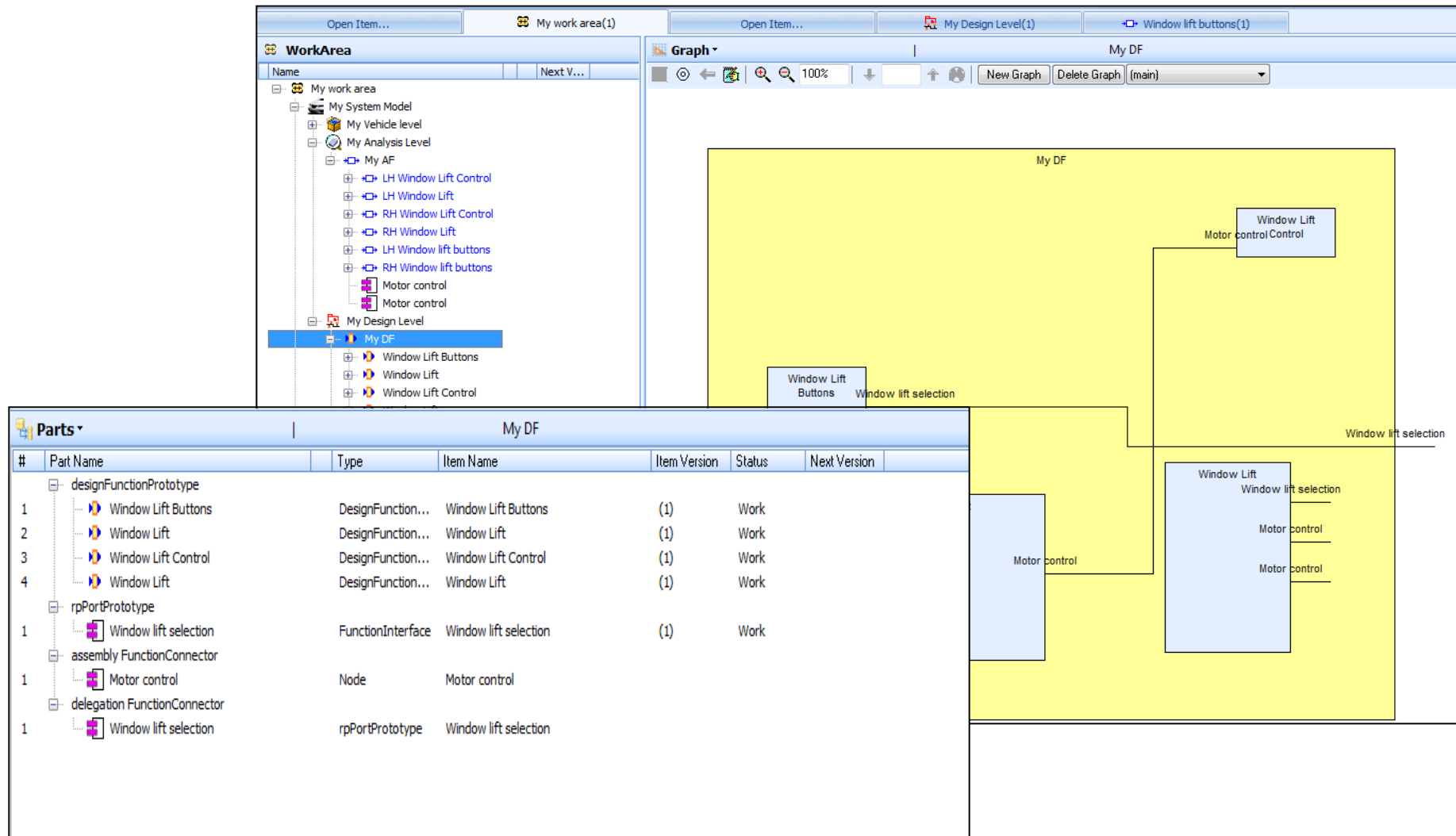
FunctionalDesignArchitecture

MetaEdit+ enabled analysis tools

- Several transformations available for Simulink, UPPAAL, SPIN enabling behavioral analysis



EAST-ADL with SystemWeaver



Conclusion

- EAST-ADL supports automotive embedded systems modelling “starting” with needs and requirements and “ending” with an AUTOSAR SW architecture
- With maturity of language comes maturity of tools
- Tree flavors of tools:
 - UML-based
 - EATOP
 - COTS Tools
- New priorities with MAENAD:
 - Interoperability: UML-profile, XML format
 - Analysis and design scenarios with various sets of tools
- ✓ See other concept presentations on Analysis workbench, Optimization and commercial tools (System Weaver and MetaEdit+)